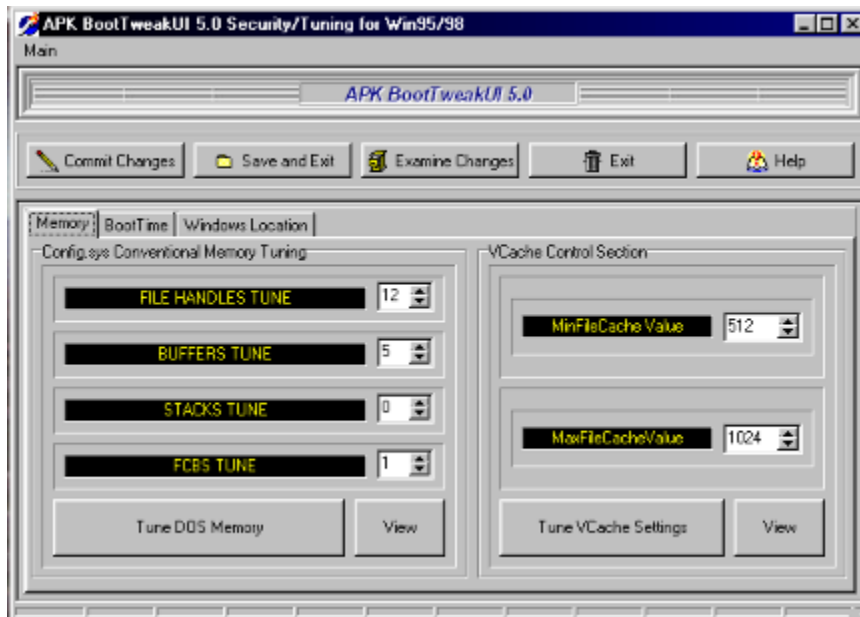


# APK BootTweakUI 5.0 Help

By Alexander Peter Kowalski  
Win32 Senior Software Engineer – Programmer/Analyst  
Atlanta, Georgia

## WHAT IS APK BOOTTWEAKUI 5.0?



APK BootTweakUI is a multifaceted program that picks up where Microsoft's TweakUI registry tweaking system left off.

This program tunes areas like the Windows95/98 Disk Caching Scheme, DOS Memory (still important in Windows95/98), MsDos.Sys settings such as booting a MultiBoot menu in DOS (Original Windows95 only!), Booting to the Windows95 GUI immediately at system start or not, Having or not having a 3-5 second delay at Boot Time of your system, Booting as a Network Client, having secured bootups by disabling F5,F6,F8 keys which bypass config.sys and autoexec.bat and other security at boottime, ScanDisk behaviour at startup (only in Windows 95 Osr/2 FAT32 and Osr/1 – Service Pack #1 for Windows95 Systems and of course Windows98!), whether to use DoubleBuffering for ScSi and IDE/EIDE BusMastering Controllers, and also where to boot Windows95 from (be it its directory/folder, disk, or folder/directory) allowing you to have multiple installs of Windows98/95 or both 95 or 98 to evaluate both models for your individual needs...

Complete System Tuning and Customization MADE SUPER EASY!!! Great for Gamers who still boot to DOS and want maximum conventional memory for gaming or for Windows95 GUI PowerUsers wanting to maximize the performance of their Vcache settings for the ULTIMATE in disk based I/O performance! Also great for folks who keep multiple installations of Windows 95 or 98 online for testing them or just to have separate installations of them online,

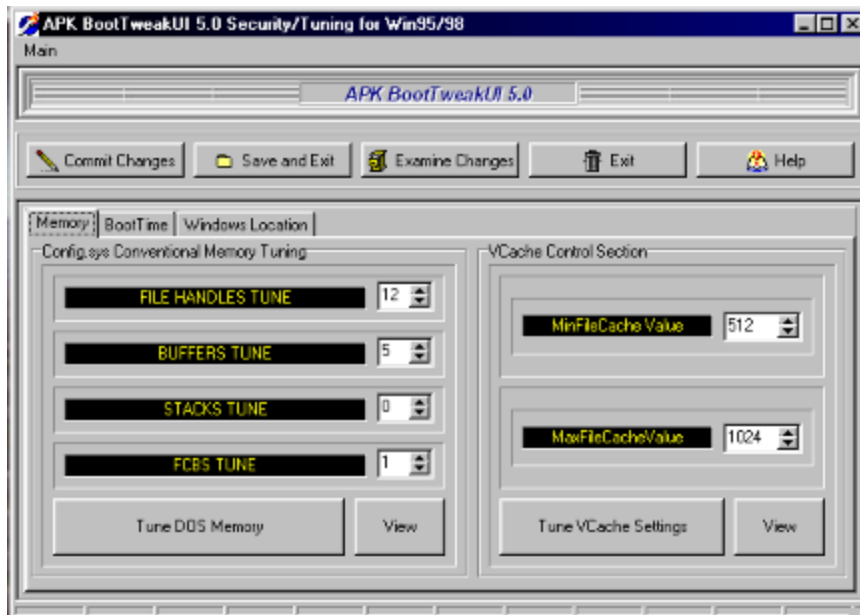
since this allows them to graphically select which one to boot and from what drive or folder/directory at next system reboot!

This is the latest release of APK BootTweakUI at version 5.0, a DOS 7.0 tuning and security utility for PowerUsers of Windows95/98 that allows tuning of both DOS and Windows RAM consumption and allocations for system performance, DOS 7.0 BootTime Settings/Configuration behaviours, and Where and what version of Windows to boot and where to boot it from.

Changes in this release are:

- 1.) Superior Memory Management internally inside the code.
- 2.) Faster routines internally.
- 3.) Greater error checking and redundancy.
- 4.) Use of the Windows registry as a backup of settings for msdos.sys and memory tuning values in the event of msdos.sys file destruction/deletion/corruption.
- 5.) Greater user "Wizard-Like" tips and walk-thrus, mostly on Windows bootup drive and directory change.
- 6.) Better interface with proceeding users from Left to Right while doing settings.
- 7.) Support for SCSI and IDE/EIDE BusMastering Controllers thru DoubleBuffering Enable/Disable.

### **HOW TO USE APK BootTweakUI 5.0!**



First thing to do is basically proceed from Left to Right on the settings screen! Tune your DOS memory first:

### **DOS MEMORY SETTINGS SECTION**

FILES : This can be as low as 12 for some machines, but games usually need at least 20 And Windows95/98 needs around 35-50 depending on what programs you run.

BUFFERS: This can be as low as 5 or as high as you like to the limit of available Memory in DOS conventional RAM 640K-1mb mark. Disk access sometimes increases with more but only to a point. It is best to let

Windows

use its own Vcache and lower this setting while running under 95. If you boot DOS prompt only from the multiboot menu, then RAISE this to increase diskspeed.

STACKS: This may be lowered to zero to save conventional memory but older programs may need more than that. Stacks function as overflow buckets for programs and the operating system for data/variables that overrun their normal "places".

FCBS : This is a legacy from older DOS programs called "File Control Blocks" and not many programs use them anymore to hold files open but older programs like Lotus 123 version 1.0 may need some. Dos and 95 default out to 4 of them, you can go as low as 1.

### VCACHE TUNING SECTION

MaxFileCache : This setting really depends on the amount of RAM you have online on your computer for the most part... This is PURELY up to you and by tuning it you may see/feel a REALLY SERIOUS PERFORMANCE DIFFERENCE in how your Operating System (95 or 98) reacts when doing disk intensive work. Making it twice MinFileCache is a good

idea!

MinFileCache : Again, dependent on RAM you have online in your machine. Making it half the size of your MaxFileCache is a good idea!

\*Some good guidelines are as follows for setting this up:

8192k / 8mb online = MinFileCache 128  
MaxFileCache 256

16384k / 16mb online = MinFileCache 256  
MaxFileCache 512

32768k / 32mb online = MinFileCache 1024  
MaxFileCache 2048

65535k / 64mb online = MinFileCache 2048  
MaxFileCache 4096



```

; d
; e
; f
; g
; h
; i
; j
; k
; l
; m
; n
; o
; p
; q
; r
; s

```

END OF MSDOS.SYS EXAMPLE FILE



EXPLANATIONS:

PATHS SECTION

WinDir : is the directory that windows will boot and run from  
WinBootDir : is the Windows boot directory  
HostWinBootDrv : is the Drive Windows will boot from

(\* This part of altering BootDir, WinDir, and HostWinBootDrv should be done LAST!!! Only after you have tuned ALL your system settings for msdos.sys and config.sys and autoexec.bat etc. etc., and this is why it is placed LEFTMOST on the program screen since it should be done LAST...apk)

OPTIONS SECTION

BootMulti : Selects whether to use DOS multiboot menu at boottime  
(original Win95 and SP#1 only)  
BootGUI : Selects whether to use a direct to Windows boot OR boot C:\>  
prompt first  
Network : Selects whether the machine is a Novell or NT network client  
DoubleBuffer : For ScSi or busmastering disk controllers diskcache tuning  
setting  
BootMenuDelay : Sets or removes 3-5 second DOS boottime menu delay  
BootKeys : Sets or remove F5,F6,F8 security keys allowed or disallowed  
for security purposes  
BootMenu : Sets to show BootMenu in Original or Service Pack #1 Windows95  
releases  
Autoscan : Sets behaviour of ScanDisk in new Windows95 Osr/2 with Fat32  
or Windows98

### **CONCLUSION:**

That is pretty much it and I hope it comes in quite handy for the power users of Windows95 and Windows95 Worldwide... If you like this program or have commentary of any kind I can be contacted at:

[alexkowalski@inetnow.net](mailto:alexkowalski@inetnow.net)

and my websites for updates are at the following two URL's:

<http://www.inetnow.net/~alexkowalski> (in the United States of America)

or

<http://pixelstation.seagull.net/APKWeb/index.html> (out of Trinidad)

Thanks,

APK 1998

